

GENERAL

- TOP LATCH INTERNAL DRIVE LIGHTNING ARRESTOR ONE CIRCUIT
- BOTTOM LATCH AIR TERMINAL TWO CIRCUIT
- EXTERNAL DRIVE FAA OBSTRUCTION LIGHT THREE CIRCUIT

04 HEAD FRAME

- 37" 44" 57"
- WELDMENT: GALVANIZED (STD) STAINLESS STEEL PAINTED
- MOUNT: TOP PLATE SLIP FITTER
- HOIST SHEAVES: ALUMINUM (STD) STAINLESS STEEL CAD PLATED STEEL
- CORD SHEAVE: PLASTIC (STD.) ALUMINUM STAINLESS STEEL
- FASTENERS: STAINLESS STEEL
- S.S. CABLE: 3/16" 1/4" 5/16" OTHER
- TOP LATCH
- LATCH CAM: STAINLESS STEEL ALUMINUM
- BOTTOM LATCH
- GUIDE BLOCK: STAINLESS STEEL ALUMINUM

ISSUED FOR APPROVAL

APPROVED: _____

REVISE: _____

SIGNED COPY REQUIRED PRIOR TO MANUFACTURE

05 LUMINAIRE RING

- 29.5" 36" 44"
- WELDMENT: GALVANIZED (STD) STAINLESS STEEL PAINTED
- ROLLERS: SPRING ARM FIXED BUMPER
- TOP LATCH BOTTOM LATCH
- LATCH SHAFT: STAINLESS STEEL GUIDE SHAFT: STAINLESS STEEL
- JUNCTION BOX: STD. (NEMA 3R ALUMINUM) STAINLESS STEEL OTHER
- SUSPENSION SPRING: STD. STAINLESS STEEL
- PLUNGER: STD. STAINLESS STEEL
- THRUST WASHER: STD. STAINLESS STEEL
- STRAND VICE: STD. STAINLESS STEEL 3/16" 1/4" 5/16"

COMMENTS: DOUBLE RING RACK CONFIGURATION FOR MORE THAN 12 FIXTURES

08 ELECTRICAL

- 120V 1 PHASE-3 WIRE 60Hz
- 120/240 3 PHASE-5 WIRE 60Hz
- 208 1 PHASE-3 WIRE 60Hz
- 208 3 PHASE-4 WIRE 60Hz
- 240 1 PHASE-3 WIRE 60Hz
- 120/240 1 PHASE-4 WIRE 60Hz
- 240/480 1 PHASE-4 WIRE 60Hz
- 277 1 PHASE-3 WIRE 60Hz
- 277/480 3 PHASE-5 WIRE 60Hz
- 480 1 PHASE-3 WIRE 60Hz
- 480 3 PHASE-4 WIRE 60Hz
- 220 1 PHASE-3 WIRE 60Hz
- 347 1 PHASE-3 WIRE 60Hz
- 347/600 3 PHASE-5 WIRE 60Hz
- 220 1 PHASE-3 WIRE 50Hz
- 240 1 PHASE-3 WIRE 50Hz
- 240/415 3 PHASE-5 WIRE 50Hz
- 220/380 3 PHASE-5 WIRE 50Hz
- OTHER

06 TRANSITION ASSEMBLY

- STANDARD OTHER

COMMENTS:

07 WINCH PLATE

- DRIVE: INTERNAL EXTERNAL
- 1.5 HP PORTABLE DRIVE UNIT
- 2.0 HP TRANSFORMER
- TORQUE TENDER: TT3 (STD) TT3X TT4 OTHER
- WINCH: PG-3 PG-7
- S.S. CABLE: 1/4" 5/16" 3/8" OTHER

COMMENTS: HEAVY DUTY PORTABLE DRIVE

SHEET

01

PROVISIONS SHEET

DWG. NO.

522-2-01

DATE:

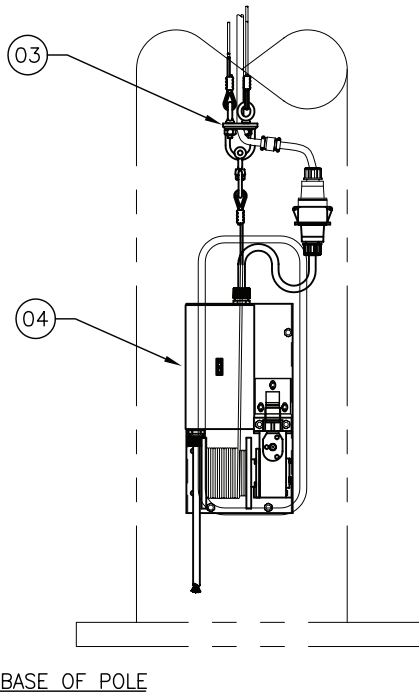
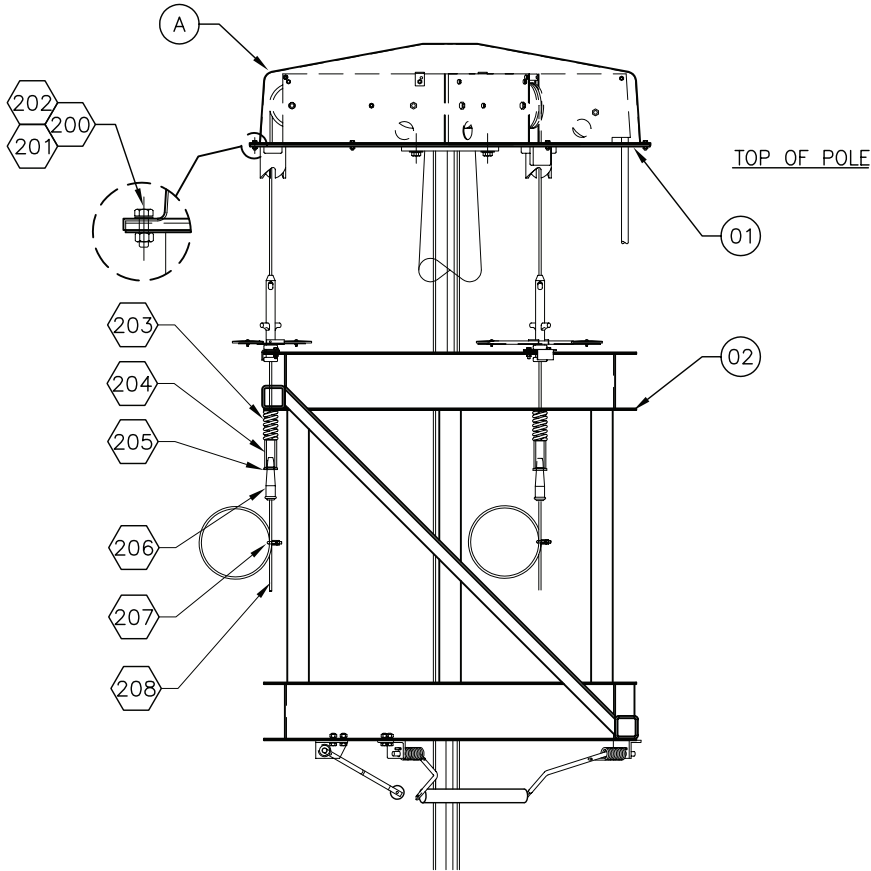
09/26/05

REV. DATE



A Division of CHM Industries

682-286-0046



ISSUED FOR APPROVAL

APPROVED: _____

REVISE: _____

SIGNED COPY REQUIRED PRIOR
TO MANUFACTURE

208	3	S.S. WIRE ROPE
207	3	ROPE CLAMP ASSEMBLY
206	3	STRAND VICE
205	3	THRUST WASHER
204	3	S.S. PLUNGER
203	3	SUSPENSION SPRING
202	6	S.S. FLAT WASHER
201	6	1/4-20 S.S. NYLOCK NUT
200	6	1/4-20 X 1" S.S. BOLT
05	1	ALUMINUM DOME
04	1	WINCH PLATE ASSEMBLY
03	1	TRANSITION ASSEMBLY
02	1	RING ASSEMBLY
01	1	HEAD FRAME ASSEMBLY
ITM	QTY	DESCRIPTION

SHEET
02

GENERAL ASSEMBLY

DWG. NO.

522-2-02

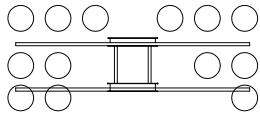
DATE:

09/26/05

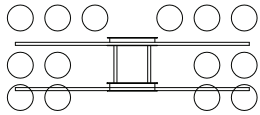
REV. DATE



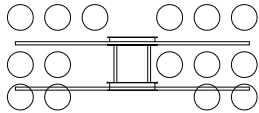
A Division of CHM Industries
682-286-0046



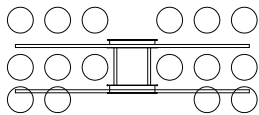
13-FIXTURE



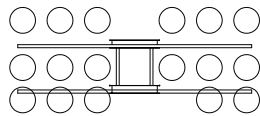
14-FIXTURE



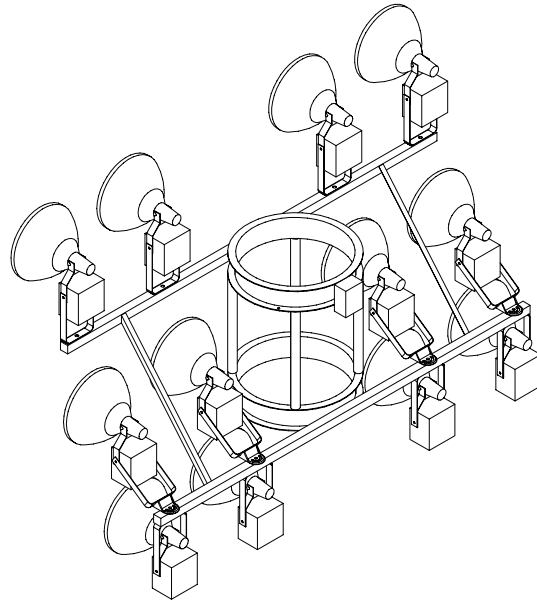
15-FIXTURE



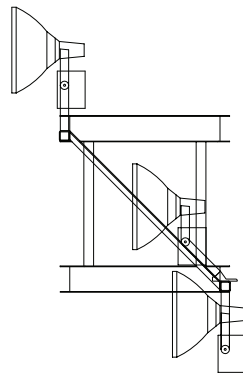
16-FIXTURE



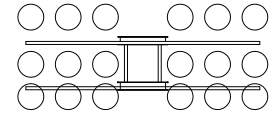
17-FIXTURE



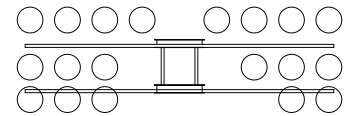
REFERENCE VIEW
(TYPICAL RACK ASSEMBLY)



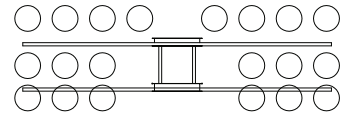
SIDE VIEW



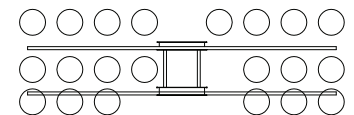
18-FIXTURE



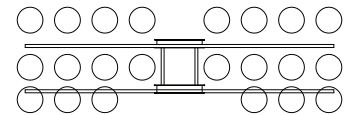
19-FIXTURE



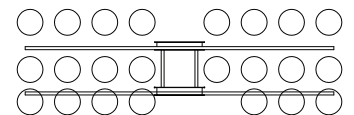
20-FIXTURE



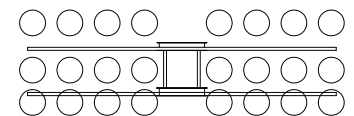
21-FIXTURE



22-FIXTURE



23-FIXTURE



24-FIXTURE

ISSUED FOR APPROVAL

APPROVED: _____

REVISE: _____

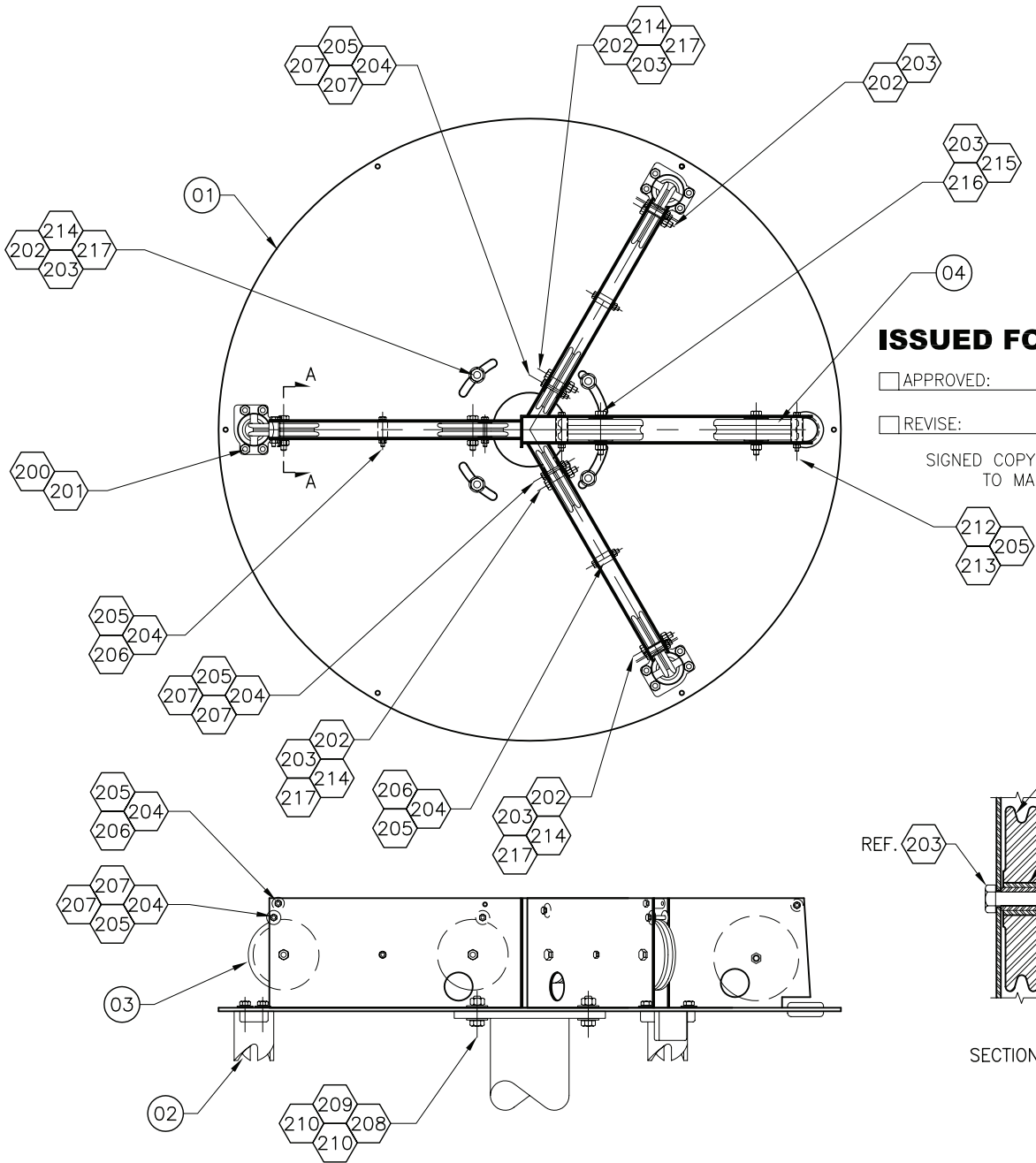
SIGNED COPY REQUIRED PRIOR
TO MANUFACTURE

SHEET
03

RECTANGULAR FIXTURE ARRAY DRAWING

DWG. NO.	522-2-03
DATE:	09/26/05
REV.	

CHM
LIGHTING
A Division of CHM Industries
682-286-0046

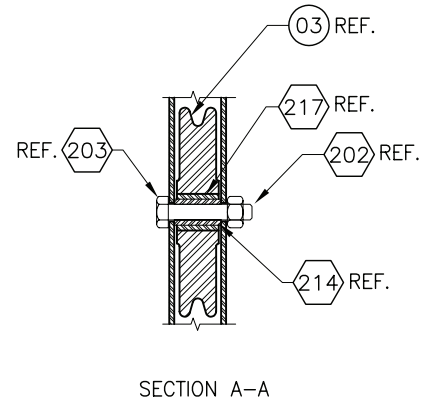


ISSUED FOR APPROVAL

APPROVED: _____

REVISE: _____

SIGNED COPY REQUIRED PRIOR TO MANUFACTURE



210	8	1/2" S.S. FLAT WASHER		
209	4	1/2-16 S.S. LOCK NUT		
208	10	1/2" S.S. FLAT WASHER		
207	12	1/4" X 1 1/4" FLAT FENDER WASHER		
206	6	1/2" SCH. 40 X 1 1/8" LONG TUBE SPACER		
205	13	1/4-20 S.S. LOCK NUT		
204	13	1/4-20 X 1 3/4 S.S. HH SHOULDER BOLT		
203	8	3/8-16 S.S. LOCK NUT		
202	8	3/8-16 X 2" S.S. HH SHOULDER BOLT		
201	12	3/8" S.S. LOCK NUT	217	6
200	12	3/8-16 X 1" S.S. HH BOLT	216	2
100	1	PLASTIC BUSHING	215	2
04	2	CORD SHEAVE	214	6
03	6	WIRE ROPE SHEAVE	213	2
02	3	LATCH CAM	212	2
01	1	HEADFRAME WELDMENT ASSEMBLY	211	
ITM	QTY	DISCRIPTION		

SHEET

04

HEAD FRAME ASSEMBLY

DWG. NO.

522-2-04

DATE:

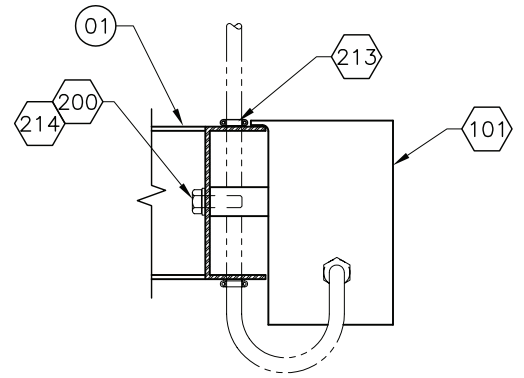
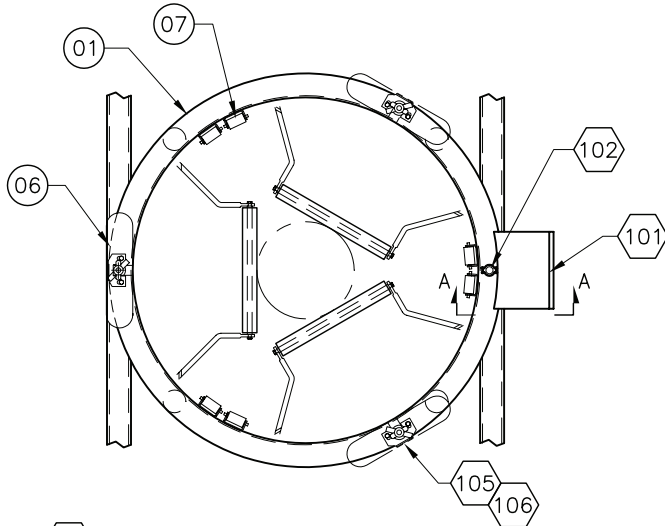
09/26/05

REV. DATE

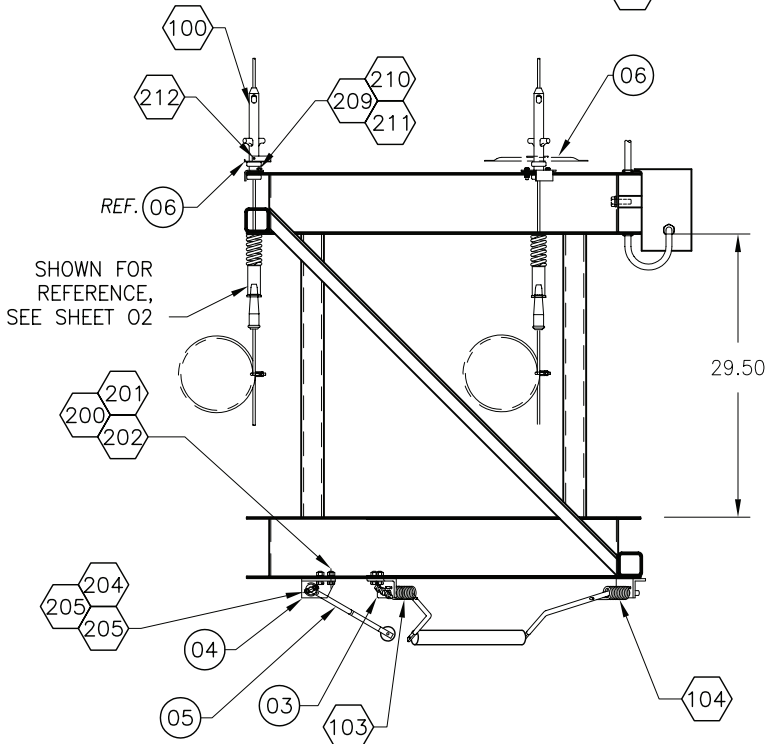


A Division of CHM Industries

682-286-0046



SECTION A-A



ISSUED FOR APPROVAL

APPROVED: _____

REVISE: _____

SIGNED COPY REQUIRED PRIOR TO MANUFACTURE

202	12	3/8" S.S. FLAT WASHER
201	14	3/8-16 S.S. LOCK NUT
200	16	3/8-16 X 1" S.S. HH BOLT
106	3	RUBBER GASKET
105	3	SHAFT RETAINING BRACKET
104	3	RH TORSION SPRING
103	3	LH TORSION SPRING
102	1	CORD CLAMP
101	1	JUNCTION BOX
100	3	LATCH SHAFT
07	6	FIXED ROLLER ASSEMBLY
06	3	LATCH INDICATOR FLAG
05	3	CENTERING ARM ASSEMBLY - S.S./PVC
04	3	RH CENTERING ARM HINGE BRACKET
03	3	LH CENTERING ARM HINGE BRACKET
02	VAR	TENON WELDMENT
01	1	RING WELDMENT
ITM	QTY	DESCRIPTION

214	2	3/8 S.S. LOCK WASHER
213	2	CORD CLAMP
212	3	#10-24 X 1/2" S.S. SCREW
211	6	5/16 S.S. FLAT WASHER
210	6	5/16-18 S.S. LOCK NUT
209	6	5/16-18 X 1" S.S. HH BOLT
208		NOT USED
207		NOT USED
206		NOT USED
205	12	1/4-20 S.S. LOCK NUT
204	6	1/4-20 X 1 1/2 S.S. HH BOLT
203	3	S.S. "E" RETAINING RING

SHEET

05

RING ASSEMBLY (RACK)

DWG. NO.

522-2-05

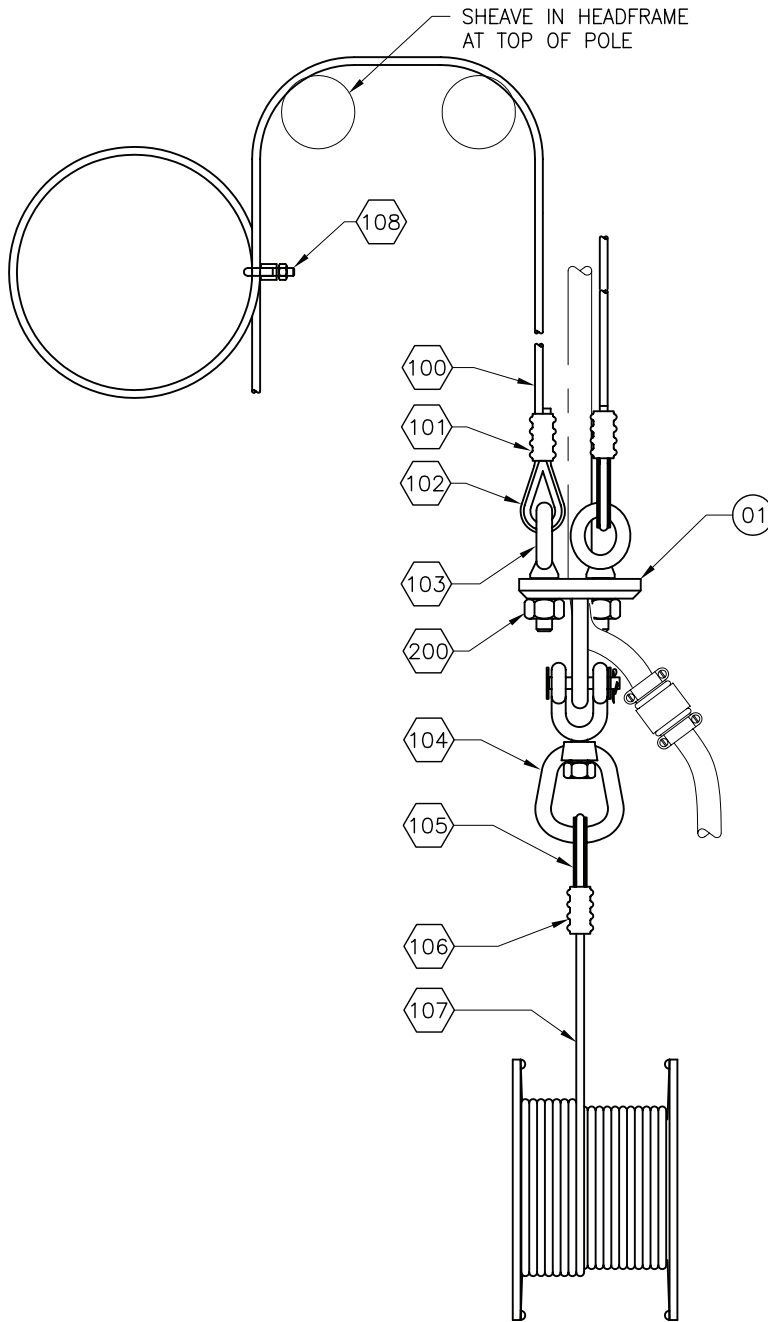
DATE:

09/26/05

REV. DATE



A Division of CHM Industries
682-286-0046



ISSUED FOR APPROVAL

APPROVED: _____

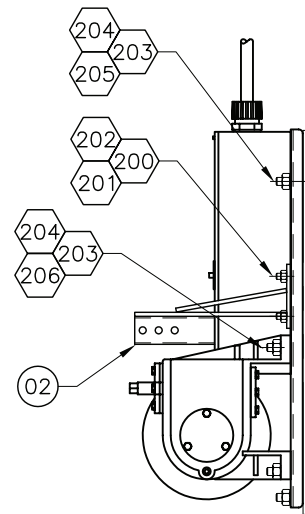
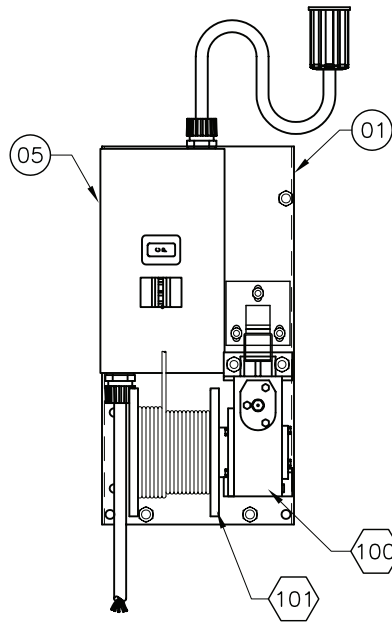
REVISE: _____

SIGNED COPY REQUIRED PRIOR
TO MANUFACTURE

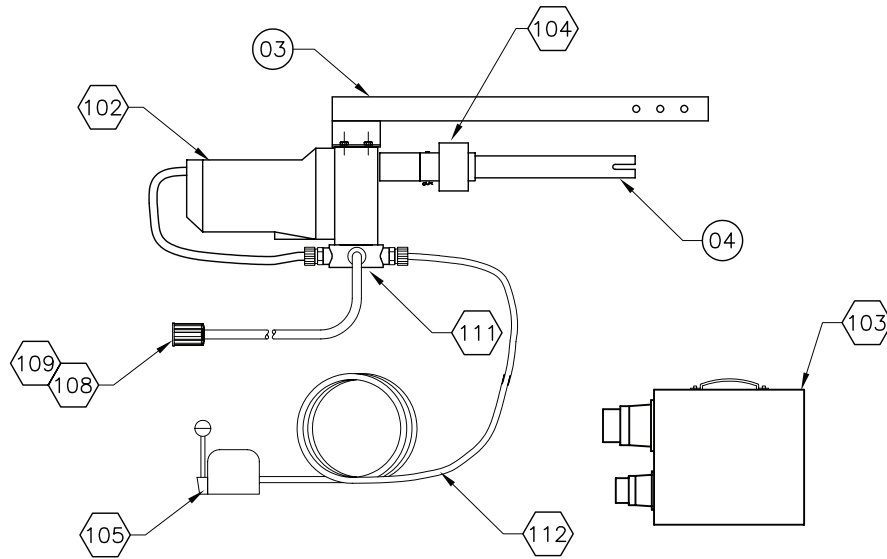
ITEM	QTY	DESCRIPTION
200	3	1/2-13 S.S. LOCK NUT
108	3	CABLE CLAMP ASSEMBLY
107	1	7-19 302/304 WIRE ROPE
106	1	ZINC PLATED COPPER COMPRESSION SLEEVE
105	1	WIRE ROPE THIMBLE
104	1	1/2" JAW AND EYE ASSEMBLY
103	3	1/2" EYE BOLT, ZINC PLATED
102	3	WIRE ROPE THIMBLE
101	3	ZINC PLATED COPPER SLEEVE
100	3	7-19 302/304 S.S. WIRE ROPE
01	1	TRANSITION PLATE WELDMENT ASSEMBLY
ITEM	QTY	DESCRIPTION

SHEET 06	TRANSITION ASSEMBLY	DWG. NO.	522-2-06
		DATE:	09/26/05
		REV. DATE	





WINCH PLATE



PORTABLE DRIVE UNIT

ISSUED FOR APPROVAL

APPROVED: _____

REVISE: _____

SIGNED COPY REQUIRED PRIOR TO MANUFACTURE

109		NOT USED
108	1	FEMALE CONNECTOR
107		NOT USED
106	1	MALE CONNECTOR
105	1	DRUM SWITCH
104	1	TORQUE TENDER
103	1	TRANSFORMER
102	1	HEAVY DUTY DRIVE MOTOR
101	1	ROPE SPOOL
100	1	WINCH
06	1	SHAFT ADAPTER
05	1	BREAKER BOX ASSEMBLY
04	1	DRIVE SHAFT
03	1	DRIVE ARM ASSEMBLY
02	1	DRIVE RECIEVER HITCH
01	1	WINCH PLATE
ITM	QTY	DESCRIPTION

211	4	1/4 S.S. LOCK WASHER
210	4	1/4-20 X 3/4" S.S. HH BOLT
209	4	1/4" S.S. FLAT WASHER
208	4	1/4-20 S.S. LOCK NUT
207	4	1/4-20 X 1" S.S. HH BOLT
206	6	1/2-13 X 2" S.S. HH BOLT
205	9	1/2" S.S. FLAT WASHER
204	9	1/2-13 S.S LOCK NUT
203	3	1/2-13 X 4" S.S STUD
202	3	3/8 S.S. FLAT WASHER
201	3	3/8-16 S.S LOCK NUT
200	3	3/8-16 X 1 1/4 S.S. HH BOLT
112	1	25 FT CORD
111	1	JUNCTION BOX
110	1	MALE CONNECTOR

SHEET
07

WINCH PLATE ASSEMBLY

DWG. NO. 522-2-07
DATE: 09/26/05
REV. DATE

CHM
LIGHTING
A Division of CHM Industries
682-286-0046