

# TP-I-02F

## INTEGRAL DRIVER CROSS ARM SYSTEM



### PROJECT INFORMATION

PROJECT NAME	
CHM JOB #	
LOCATION	

### STRUCTURAL INFORMATION

FIXTURE COUNT	
MOUNTING HEIGHT	
BASE TYPE	
DESIGN CRITERIA	
WIND SPEED	

### ELECTRICAL INFORMATION

SOURCE VOLTAGE	
SOURCE PHASING	
FIXTURE VOLTAGE	

### LUMINAIRE INFORMATION

FIXTURE TYPE	
DRIVER TYPE	
FIXTURE WATTAGE	
CCT	
CRI	
LIGHTING DESIGN #	

### WARRANTY

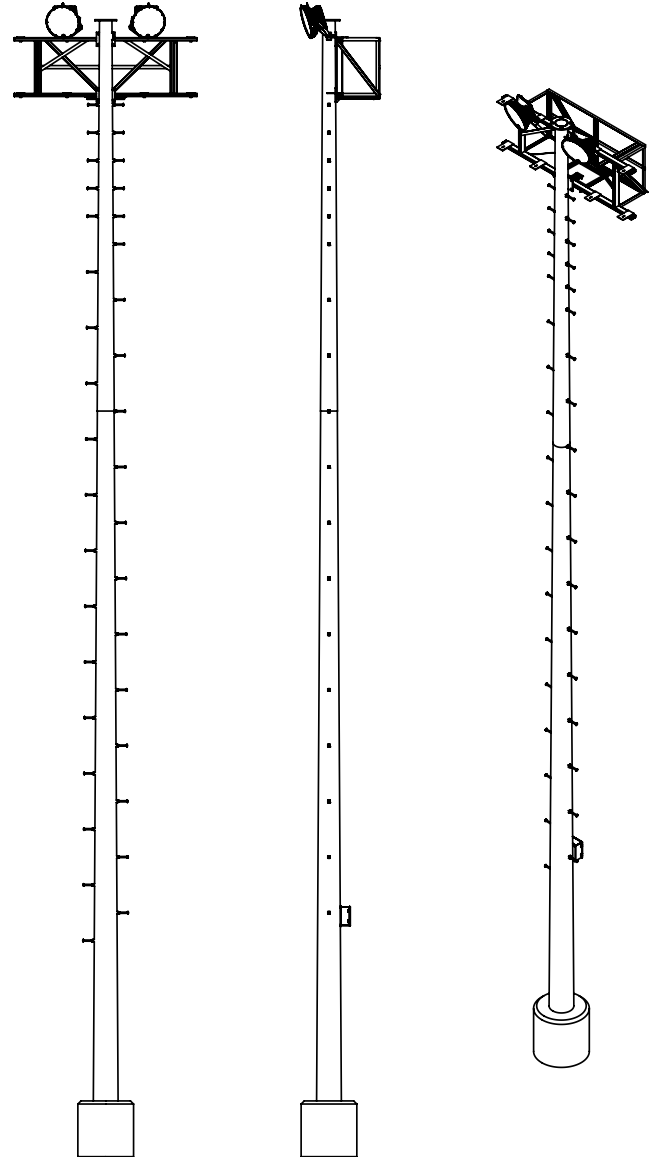
PARTS WARRANTY	
LABOR WARRANTY	

### AGENCY INFORMATION

AGENCY	
AGENT	

### NOTES

FOR TOWER NUMBERS	



DO NOT SCALE DRAWING. REFERENCE TOWER AND FOUNDATION DRAWING FOR STRUCTURAL SPECIFICATIONS.

SYSTEM IS MANUFACTURED IN FORT WORTH, TEXAS BY CHM SPORTS LIGHTING, A DIVISION OF CHM INDUSTRIES, INC. COMPLETE SYSTEM IS ETL LISTED (TO STANDARD UL1598) INCLUDING REMOTE DRIVER ENCLOSURES, DROP CABLES, PRE-WIRED CROSS ARMS AND LUMINAIRES. SEE TOWER DRAWING FOR STRUCTURAL DETAILS. IF CUSTOMIZATION OF TOWER IS REQUIRED, PLEASE SEE TOWER CUSTOMIZATION WORK SHEET FOR PROVISIONS.